

# State of Wyoming Corner Record

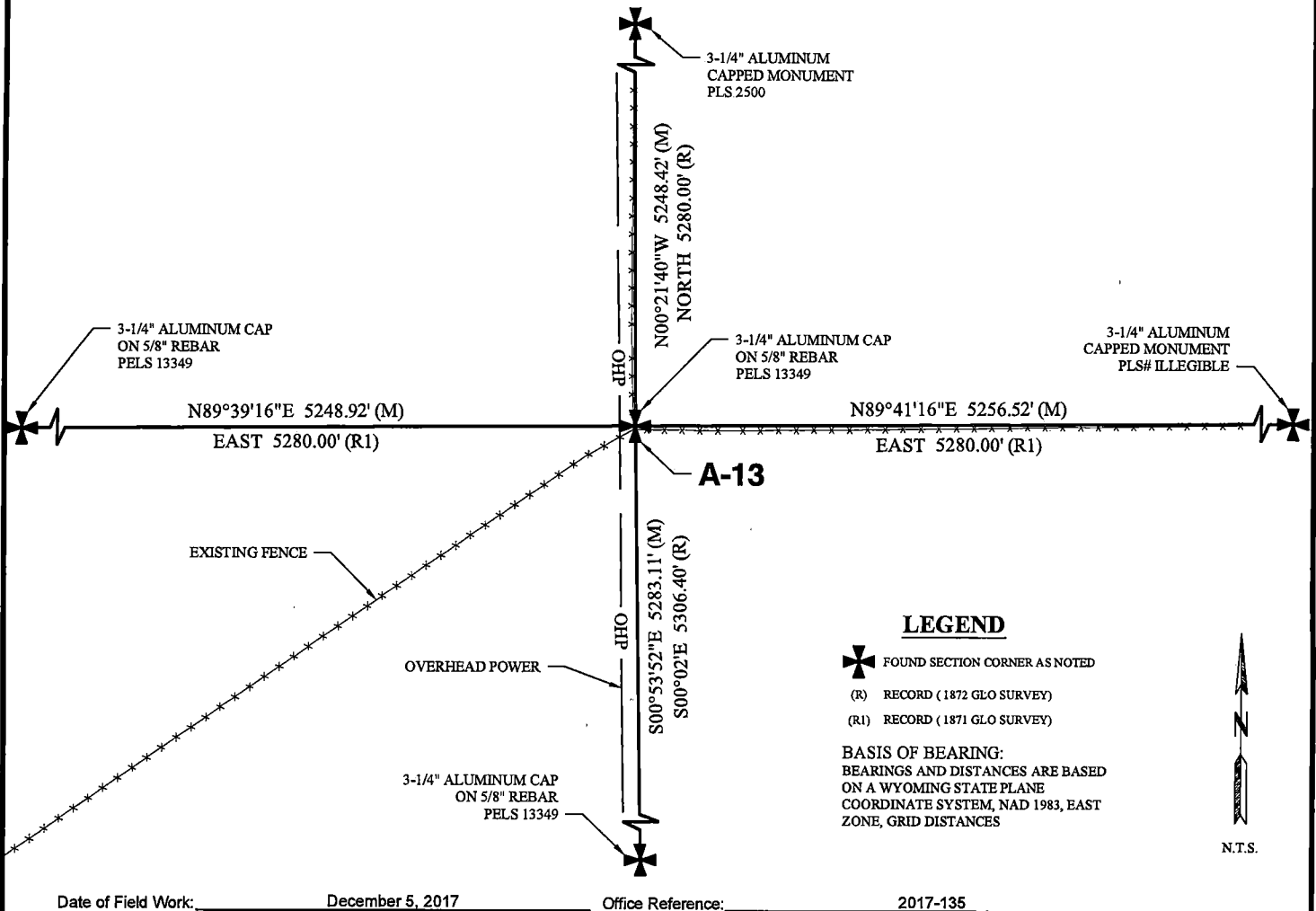
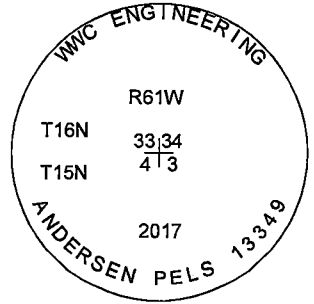
(In compliance with the CORNER PERPETUATION AND FILING ACT, Wyoming Statutes, 1997, Section 33-29-140, et seq., and the Rules and Regulations of the Board of Registration for Professional Engineers and Professional Land Surveyors)

Reverse side of this form may be used if more space is needed.

Record of original survey and citation of source of historical information (if corner is lost or obliterated.) Description of corner monumentation evidence found and/or monument and accessories established to perpetuate the location of this corner. Sketch of relative location of monument, accessories, and reference points with course and distance to adjacent corner(s) (if determined in this survey). Method and rationale for reestablishment of lost or obliterated corner.

**EVIDENCE RECORD:** 1871 GLO Survey: East on a true line along the south boundary of section 33, 80.00 chains. Set a granite boulder. 18"x10"x6" for corner to sections 33, 34, 3 & 4.

**EVIDENCE FOUND:** December 2017: Found a granite stone with notches in fence corner. Stone not well set. Accepted position for the corner to sections 33, 34, 3 & 4. Set a 3 1/4" aluminum cap marked as shown on a 5/8" rebar, 24" long, alongside granite stone in fence corner.



### LEGEND

- FOUND SECTION CORNER AS NOTED
- (R) RECORD (1872 GLO SURVEY)
- (R1) RECORD (1871 GLO SURVEY)

**BASIS OF BEARING:**  
BEARINGS AND DISTANCES ARE BASED ON A WYOMING STATE PLANE COORDINATE SYSTEM, NAD 1983, EAST ZONE, GRID DISTANCES

Date of Field Work: December 5, 2017

Office Reference: 2017-135

### CROSS INDEX DIAGRAM

	1	2	3	4	5	6	7	8	9	10	11	12	13	14	15	16	17	18	19	20	21	22	23	24	25	
A																										A
B																										B
C	6						5						4												1	C
D																										D
E																										E
F																										F
G																										G
H	7						8						9												12	H
J																										J
K																										K
L	18						17						16												13	L
M																										M
N																										N
O																										O
P																										P
Q	19						20						21												24	Q
R																										R
S																										S
T																										T
U	30						29						28												25	U
V																										V
W																										W
X																										X
Y	31						32						33												36	Y
Z																										Z

Land Surveyor / Firm / Address  
Clint E. Andersen

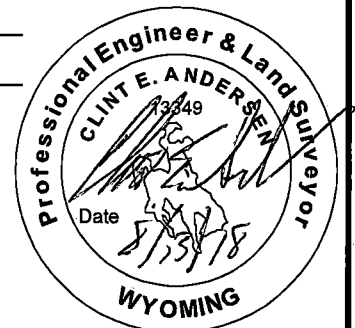
WWC Engineering

51 N. 15th Street, Suite 1

Billings, MT 59101

Telephone: (406) 894-2210

This corner record was prepared by me or under my direction and supervision.  
SEAL & SIGNATURE



Corner Name: Northeast Corner Section: 4 T 15N R 61W; 6TH P.M. Cross-Index No.: A-13  
SBRPEPLS/PLSW: March 1994; PLSW January 1998



REC'D #: 739828

RECORDED 10/1/2018 AT 1:27 PM BK# 2598 PG# 262  
Debra K. Lee, CLERK OF LARAMIE COUNTY, WY, PAGE 1 OF 1